



# SNIPPERS & TUBING CUTTERS

# WE TAKE QUALITY PERSONALLY.

Fame is not our mission. The average person may not have heard of WHEELER-REX. That's just fine with us. We have been quietly producing the very best, hand made, personally inspected and serviced tools for water works and plumbing contractors since the 1950s.

While our competitors are focused on advertising to get the next customer, WHEELER-REX is working harder on service and quality because for us, our reputation is our marketing strategy.

**1** SNIPPER SERIES  
PAGES 4-7

**2** TUBING CUTTER SERIES  
PAGES 8-17

**3** OTHER TOOLS  
PAGES 18-19

MODEL NAME	MODEL NO.	O.D. CAPACITY	MATERIALS					PAGE NO.
			PLASTIC /PVC	COPPER	ALUMINUM	STEEL/ STAINLESS	GLASS	
Professional snipper	5190/5191	1/8" - 1 1/4"	•					4
	5291	1/8" - 1 5/8"	•					5
	7291	1/8" - 2 7/16"	•					6
Economy snipper	4190	1/4" - 3/8"	•					7
	5195	1/8" - 1 1/4"	•					7
	5295	1/8" - 1 5/8"	•					7
Auto-C cutter	5690	1/2" (I.D.)	•	•				8
	5691	3/4" (I.D.)	•	•				8
	5692	1" (I.D.)	•	•				8
Close quarters cutter	4992	1/4" - 2 3/8"	•	•				9
Mini tubing cutter	90721	1/8" - 1"		•	•			10
	90727	1/8" - 1 1/8"		•	•			10
Tubing cutter	90710	1/8" - 1 1/8"		•	•			11
Telescopic tubing cutter	90734	1/8" - 1 3/8"		•	•			11
Quick release tubing cutter	90747	1/4" - 3"		•	•			12
	90748	2" - 5"		•	•			13
	90749	4" - 6 5/8"		•	•			13
Stainless steel tubing cutter	90724	1/8" - 1 1/8"				•		14
	90730	1/8" - 1 3/4"				•		14
	90764	1/4" - 3"				•		14
Ratch cut tube & pipe cutter	3590	1/8" - 3/8"	•	•	•			15
	3790	5/16" - 1 1/8"	•	•	•			15
Glass tube cutter	69012	1/4" - 3/4"					•	16
	79014	1/4" - 1"					•	16
	79022	1/4" - 1 1/2"					•	16

# SNIPPER SERIES

PROFESSIONAL SNIPPER SERIES

## PROFESSIONAL MINI SNIPPER

MODEL NO.

**5190** WITH STANDARD BLADE  
**5191** WITH PTFE COATED BLADE



Professional snipper with single-handed spring action.

### MATERIALS

Thin Wall PVC  
Vinyl  
Poly pipe and tubing  
PEX  
Rubber

### FEATURES

Cuts 1/8" - 1 1/4" OD materials  
Durable die-cast aluminum handles – not plastic  
Reversible blade for double life  
5191 features PTFE coated blade for smoother cut

### REPLACEMENT BLADE

**NO. 5200**  
Standard replacement blade

**NO. 5299**  
PTFE coated replacement blade



MODEL NO.	O.D. CAPACITY	WEIGHT	REPLACEMENT BLADE NO.
5190	1/8" - 1 1/4" 3mm - 31mm	.07 lbs 0.3 kg	5200
5191	1/8" - 1 1/4" 3mm - 31mm	.07 lbs 0.3 kg	5299

PROFESSIONAL SNIPPER SERIES

## PROFESSIONAL SNIPPER

MODEL NO. 5291



Professional snipper with single-handed ratchet action.

### MATERIALS

PVC  
ABS  
Vinyl  
Poly pipe and tubing  
PEX

### FEATURES

One-handed ratcheting operation  
Hand ground replaceable blade  
Provides a square cut on 1/8" - 1 5/8" OD Schedule 40 materials  
Cuts PVC, ABS, vinyl, poly and tubing  
Blades can be sharpened with WHEELER-REX Model 7325 Blade Sharpener

### O.D. CAPACITY

1/8" - 1 5/8"  
3mm - 42mm

### WEIGHT

1 lbs. (0.5 kg)



Hand ground replaceable blade.



One-Handed ratcheting operation.

### REPLACEMENT BLADE

NO. 5300



PROFESSIONAL SNIPPER SERIES

## PROFESSIONAL SNIPPER

MODEL NO. 7291



Professional single-handed ratchet action snipper.

**MATERIALS**

PVC  
ABS  
Vinyl  
Poly pipe and tubing  
PEX

**FEATURES**

Hand ground replaceable blade  
Provides square cut on 1/8" - 2 7/16" OD Schedule 40  
The blade can easily be sharpened with WHEELER-REX model 7325 blade sharpener

**O.D. CAPACITY**

1/8" - 2 7/16"  
3mm - 63mm

**WEIGHT**

1 lbs. (0.5 kg)



Hand ground replaceable blade.



One-handed ratcheting operation.

**REPLACEMENT BLADE NO. 7324**



ECONOMY SNIPPER SERIES

## ECONOMY SNIPPER

MODEL NO. 5195



Cost effective model for the occasional job.

**MATERIALS**

Hose  
Soft plastic tubing

**FEATURES**

Cuts 1/8" - 1 1/4" OD  
Replaceable blade No. 5196

**O.D. CAPACITY**

1/8" - 1 1/4"  
3mm - 31mm

**WEIGHT**

0.7 lbs. (0.3 kg)

**REPLACEMENT BLADE NO. 5196**

ECONOMY SNIPPER SERIES

## ECONOMY RATCHET ACTION SNIPPER

MODEL NO. 5295



Cost effective single-handed ratchet action snipper.

**MATERIALS**

PVC  
ABS  
Vinyl  
Poly pipe and tubing

**FEATURES**

Cuts 1/8" - 1 5/8" OD  
Schedule 40 materials  
Anti-rust, anti-wear construction  
Replacement blade No. 5296

**O.D. CAPACITY**

1/8" - 1 5/8"  
3mm - 41mm

**WEIGHT**

1 lbs. (0.45 kg)

**REPLACEMENT BLADE NO. 5296**

ECONOMY SNIPPER SERIES

## MICRO SNIPPER

MODEL NO. 4190



Micro snipper for 1/4" - 3/8" OD materials.

**MATERIALS**

Plastic Tubing  
Hose

**FEATURES**

Micro snipper designed for cutting plastic hose and tubing  
Great for PVC supply lines

**O.D. CAPACITY**

1/4" - 3/8"  
6mm - 9mm

**WEIGHT**

0.15 lbs. (0.07 kg)

**REPLACEMENT BLADE N/A**

## BLADE SHARPENER

MODEL NO. 7325



Quickly sharpens snipper blades

**FEATURES**

Easily restores the sharp edge on snipper blades

Requires just 3 or 4 strokes to properly put edge back on blade

Works great on snipper blades, guillotine cutter blades and knives

# TUBING CUTTER SERIES

## AUTO-C TUBING CUTTERS

MODEL NO. 5690/5691/5692



Spring-loaded cutter wheel ideal for close quarters.

### MATERIALS

Type-K copper  
Type-L copper  
Type-M copper  
CTS CPVC

Cut will be complete in seconds  
Spring-loaded cutter wheel self-feeds with consistent pressure  
Cuts type-K, L and M copper

### FEATURES

Easy to grip without requiring any swing space

Simple use, just turn the cutter in the direction of the arrow

### REPLACEMENT CUTTER WHEEL NO. 8046



MODEL NO.	O.D. CAPACITY		WEIGHT		REPLACEMENT CUTTER WHEEL NO.
5690	1/2"	15.9mm	.5 lbs	0.23 kg	8046
5691	3/4"	22.2mm	.5 lbs	0.23 kg	8046
5692	1"	28.6mm	.5 lbs	0.23 kg	8046

## CLOSE QUARTERS TUBING CUTTER

MODEL NO. 4992



No tool required for fast wheel change.



Four rollers help create a more stable cut.

Adjustable close quarters cutter for up to 2 3/8" materials.

### MATERIALS

Plastic tube  
Non-ferrous materials

### FEATURES

Designed for plumbing, commercial boiler and air conditioning jobs  
With no swing space needed, perfect for jobs in tight areas  
Adjustable cutter going from 1/4" - 2 3/8" OD non-ferrous and plastic materials  
Cuts thin-wall material like traps and tailpieces with no distortion  
Great for under vanities, close to walls, waste and overflows.  
Optional wheel for plastic available, part No. 8033

### O.D. CAPACITY

1/4" - 2 3/8"  
6mm - 59mm

### WEIGHT

1.1 lbs. (0.5 kg)

### REPLACEMENT CUTTER WHEEL NO. 8038

for metal



### REPLACEMENT CUTTER WHEEL NO. 8033

for plastic



## MINI TUBING CUTTERS

MODEL NO. 90721



Compact cutter for tight spaces.

### MATERIALS

Copper  
Aluminum  
Thin Wall Metals

### FEATURES

Designed to cut material from 1/8" - 1"  
Compact cutter perfect for use in tight spaces  
No tool required for fast wheel change  
Ergonomic knob

### O.D. CAPACITY

1/8" - 1"  
3mm-25mm

### WEIGHT

0.3 lbs (0.15 kg)

**REPLACEMENT CUTTER WHEEL**  
**8069**

MODEL NO. 90727



Compact cutter for tight spaces.

### MATERIALS

Copper  
Aluminum  
Thin Wall Metals

### FEATURES

Mini tubing cutter designed to cut 1/8" - 1 1/8" materials  
No tool required for fast wheel change  
Ergonomic knob  
Extra cutter wheel in the knob

### O.D. CAPACITY

1/8" - 1 1/8"  
3mm - 30mm

### WEIGHT

0.5 lbs (0.22 kg)

**REPLACEMENT CUTTER WHEEL**  
**8069**

## TELESCOPIC TUBING CUTTER

MODEL NO. 90734



Tubing cutter for 1/8" - 1 3/8".

### MATERIALS

Copper  
Aluminum  
Thin Wall Metals

### FEATURES

Telescopic tubing cutter designed to cut 1/8" - 1 3/8" materials  
No tool required for fast wheel change  
Four rollers help create a more stable cut  
Complete removable swivel reamer  
Extra cutter wheel in knob

### O.D. CAPACITY

1/8" - 1 3/8"  
3mm - 35mm

### WEIGHT

0.8 lbs (0.35kg)

**REPLACEMENT CUTTER WHEEL**  
**8069**

## TUBING CUTTER

MODEL NO. 90710



Tubing cutter for 1/8" - 1 1/8".

### MATERIALS

Copper  
Aluminum  
Thin Wall Metals

### FEATURES

Designed for cutting materials 1/8" - 1 1/8"  
Grooved roller allows for close to flare cut  
No tool required for fast wheel change  
Ergonomic knob

### O.D. CAPACITY

1/8" - 1 1/8"  
3mm - 30mm

### WEIGHT

0.8 lbs (0.35kg)

**REPLACEMENT CUTTER WHEEL**  
**8069**

### REPLACEMENT CUTTER WHEEL

**NO. 8069**  
For model numbers 90721, 90727, 90734, 90710



## QUICK RELEASE TUBING CUTTER

MODEL NO. 90747



No tool required for fast wheel change.



Complete removable swivel reamer.

Quick release tubing cutter for 1/4" - 3".

### MATERIALS

Copper  
Aluminum  
Thin Wall Metals

### FEATURES

Quick release cutter designed to cut 1/4" - 3" materials  
No tool required for fast wheel change  
Four rollers help create a more stable cut  
Complete removable swivel reamer  
Extra cutter wheel in knob

### O.D. CAPACITY

1/4" - 3"  
6mm - 76mm

### WEIGHT

2 lbs (0.9 kg)

### REPLACEMENT CUTTER WHEEL

**NO. 8069**  
for metal



**NO. 8068**  
for plastic



## QUICK RELEASE TUBING CUTTER

MODEL NO. 90748



Tubing cutter for 2" - 5".

### MATERIALS

Copper  
Aluminum  
Thin Wall Metals

### FEATURES

No tool required for fast wheel change  
Adjustable third roller in two positions for better guiding of tube while cutting  
Complete removable swivel reamer  
Extra cutter wheel in knob  
Comes with cutter wheel for plastic No. 8066. Optional cutter wheel for copper No. 8067.

### O.D. CAPACITY

2" - 5"  
50mm-127mm

### WEIGHT

3.6 lbs (1.65 kg)

## QUICK RELEASE TUBING CUTTER

MODEL NO. 90749



Tubing cutter for 4" - 6 5/8".

### MATERIALS

Copper  
Aluminum  
Thin Wall Metals

### O.D. CAPACITY

4" - 6 5/8"  
100mm - 170mm

### FEATURES

Refer to model number 90748 features.

### WEIGHT

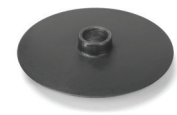
4 lbs (1.8 kg)

### REPLACEMENT CUTTER WHEEL

**NO. 8067**  
for metal



**NO. 8066**  
for plastic



## STAINLESS STEEL MINI TUBING CUTTER

MODEL NO. 90724



Tubing cutter for SS 1/8" - 1 1/8".

### MATERIALS

Stainless Steel

Steel feed screw system

Specifically designed cutter wheels with needle bearings for durability

### O.D. CAPACITY

1/8" - 1 1/8"

3mm - 30mm

### WEIGHT

0.5 lbs. (0.22 kg)

### REPLACEMENT CUTTER WHEEL

90799

### FEATURES

Specifically designed to cut stainless steel from 1/8" - 1 1/8"

No tool required to change cutter wheel and pin

## STAINLESS STEEL TUBING CUTTER

MODEL NO. 90730



Tubing cutter for SS 1/8" - 1 3/4".

### MATERIALS

Stainless Steel

Steel feed screw system

Specifically designed cutter wheels with needle bearings for durability

### O.D. CAPACITY

1/8" - 1 3/4"

3mm - 44.45mm

### WEIGHT

0.9 lbs. (0.41 kg)

### REPLACEMENT CUTTER WHEEL

90799

### FEATURES

Specifically designed to cut stainless steel from 1/8" - 1 3/4"

No tool required to change cutter wheel and pin

## STAINLESS STEEL TUBING CUTTER

MODEL NO. 90764



Tubing cutter for SS 1/4" - 3".

### MATERIALS

Stainless Steel

Steel feed screw system

Specifically designed cutter wheels with needle bearings for durability

### O.D. CAPACITY

1/4" - 3"

6.35mm - 76.2mm

### WEIGHT

2 lbs. (0.9 kg)

### REPLACEMENT CUTTER WHEEL

90799

### FEATURES

Specifically designed to cut stainless steel from 1/4" - 3"

No tool required to change cutter wheel and pin

## RATCHET CUT TUBE AND PIPE CUTTER

MODEL NO. 3590/3790



3590



3790

Ratchet cutter with metal handle for 1/8" - 3/8", 5/16" - 1 1/8"

### MATERIALS

Mild or stainless steel

Copper

Thin wall PVC

CPVC

### FEATURES

Designed for fast, accurate pipe cutting

Ratcheting action is ideal for confined, nearly inaccessible locations

Replacement cutter wheel 8040 for 3590

Cutter wheel for thin walled SS for 3790 5/16" - 1 1/8"

Replacement cutter wheel 8041 for 3790

MODEL NO.	O.D. CAPACITY	WEIGHT	REPLACEMENT CUTTER WHEEL NO.
3590	1/8" - 3/8" 3mm - 9mm	0.5 lbs 0.23 kg	8040
3790	5/16" - 1 1/8" 8mm - 27mm	1.5 lbs 0.68 kg	8041/8044(SS)



# GLASS TUBE CUTTERS

## GLASS TUBE CUTTERS

MODEL NO. 69012/79014/79022



Chain cutter for glass tube.

### MATERIALS

Glass tube  
Glass pipe  
Brittle tubular materials

### FEATURES

Designed to cut glass tube and brittle tubular materials from ¼" - 1½"  
Based on the original Wheeler "squeeze and pop" principle  
Replaceable chain

MODEL NO.	O.D. CAPACITY		WEIGHT		REPLACEMENT CHAIN NO.	NO. OF PINS
69012	¼" - ¾"	6mm - 18mm	1 lbs	0.45 kg	690012	12
79014	¼" - 1"	6mm - 25mm	1 lbs	0.45 kg	7914	14
79022	¼" - 1½"	6mm - 37mm	1 lbs	0.45 kg	7922	22

## METAL TUBING CUTTERS

WHEELER-REX		RIDGID®		REED	
CUTTER WHEEL MODEL NO.	TUBING CUTTER MODEL NO.	CUTTER WHEEL MODEL NO.	TUBING CUTTER MODEL NO.	CUTTER WHEEL MODEL NO.	TUBING CUTTER MODEL NO.
8012	9290, 9291	E1240	10, 15, 20	OSS	TC1Q, TC1.6Q, TC2Q, T10, T15, T20
8015	9290, 9291	F158	10, 15, 20	0	TC1Q, TC1.6Q, TC2Q, T10, T15, T20
8021		E2191	30, 40, 106, 108, 109, 122, 133, 134, 136, 154, 156	30-40	TC3Q, TC4Q, TC5Q, TC6Q, TC8Q
8025	9490	E2558	30, 40, 106, 108, 109, 133, 134, 136, 154, 156	30-40	TC3Q, TC4Q, TC5Q, TC6Q, TC8Q
8034		E3469	101, 103, 104, 105, 117, 118, 131, 132, 150, 151, 152, 153, 205	345T	MC2
8038	4992, 4991, 4990				
8040	2590, 3590				
8041	3790				
8044 (SS)	3790				
8045	90722	E4546	105, 131, 132, 150-153, 205	R4546	MC2
8046	5690, 5691, 5692			SLRCW	TC50SL, TC75SL, TC1SL
8067	90748, 90749	E2558	30, 40, 106, 108, 109, 133, 134, 136, 154, 156	30-40	TC3Q, TC4Q, TC5Q, TC6Q, TC8Q
8069	90710, 90721, 90727, 90734, 90747	F158	10, 15, 20	0	TC1Q, TC1.6Q, TC2Q, T10, T15, T20
8071	90735, 90728, 90750			73505	TC14, TC166, MC3
90799 (SS)	90724, 90730, 90764				

## PLASTIC TUBING CUTTERS

CUTTER WHEEL MODEL NO.	TUBING CUTTER MODEL NO.	CUTTER WHEEL MODEL NO.	TUBING CUTTER MODEL NO.	CUTTER WHEEL MODEL NO.	TUBING CUTTER MODEL NO.
8033	4992				
8037		E2156, E5299, E2157		3-6PVC	TC3Q, TC4Q, TC5Q, TC6Q
8066	90748, 90749		30P, 40P, 133P, 134P, 136P, 154P, 156P, 106, 109P	80P	TC6Q, TC8Q
8068	90747				
8073	90750			OP2	TC1Q, TC1.6Q, TC2Q, T10, T15, T20
8074	90751				
8075	90752				

# OTHER TOOLS

## COPPER TUBE CLEANER

MODEL NO. 450/4506

Cleans inside and outside of copper tubing.

### MATERIALS

Copper

### FEATURES

Cleans inside and outside of 1/2" - 3/4" tubing

Leaves surface polished and cleaned for optimum solder flow

Replaceable high carbon steel bristles extend tool life  
No. 4506 deburrs the inside of tubing with hardened steel reamer/deburrer

Four-piece replacement brush set No. 452

### O.D. CAPACITY

450/4506: 1/2" - 3/4"  
(12.7mm - 19.05mm)

### WEIGHT

450/4506: 1 lbs. (0.5 kg)



450

4506

### REPLACEMENT BRUSH

452

## INNER AND OUTER REAMER

MODEL NO. 50100

Reamer for 3/8" - 2" materials.

### MATERIALS

Copper  
Stainless Steel tubing

### FEATURES

Quickly cleans copper and SS tubing

Outer deburring and beveling for 3/8" - 2"

Made of hardened steel construction

### O.D. CAPACITY

3/8" - 2"  
10mm - 54mm

### WEIGHT

1 lbs. (0.46 kg)



## DEBURRING TOOL

MODEL NO. 920/921

Steel blade tool removes burrs in materials.

### MATERIALS

Copper  
Plastic  
Aluminum  
Steel tubing

### FEATURES

Ideal for removing internal burrs

Features long lasting replaceable high-speed steel blade

Plastic handle has built-in pocket clip



No. 921 is 10-pack of 920 deburring tools in handy hang-up pack

### WEIGHT

920: 0.05 lbs. (0.001 kg)

921: 0.6 lbs. (0.17 kg)

REPLACEMENT HSS BLADE  
80711



No. 921  
10-Pack

## RETRACTABLE UTILITY KNIFE

MODEL NO. 5741

Retractable utility knife.

### FEATURES

No tool required for quick blade change

Interlock system

Curved comfort design

Two extra blades included  
Internal blade storage

### WEIGHT

0.4 lbs. (0.2 kg)

REPLACEMENT BLADE  
5761



## SELF-RETRACTING SAFETY KNIFE

MODEL NO. 5751

Self-retracting blade.

### FEATURES

No tool required for quick blade change

Interlock system

Curved comfort design

Two extra blades included  
Internal blade storage

### WEIGHT

0.4 lbs. (0.2 kg)

REPLACEMENT BLADE  
5761



# WITH PATIENCE COMES QUALITY.

Some have said that our standard of quality is too high. Maybe if our tools weren't built to last so long and we spent less time focused on supporting our current customers we would be more like the big tool brands. That's not the way we work.

WHEELER-REX is not a brand, it's a reputation. To us it's personal. Our reputation is all we have, it's all we sell.

We don't pour millions of dollars into marketing. Rather, we invest heavily in

our products and our people.

We have blended the best of Japanese and American manufacturing culture to create a company focused on product perfection, employee pride and customer success.

If you're looking to impress others with a bigger brand then we may not be for you.

We say, impress yourself with tools and relationships that last, choose WHEELER-REX.

## WHEELER-REX

P.O. Box 688  
3744 Jefferson Road  
Ashtabula, OH, USA 44005

440-998-2788  
440-992-2925 fx  
1-800-321-7950 Toll Free  
wheelerrex.com

© Rex International USA, Inc.

